



**India Meteorological Department
(Ministry of Earth Sciences)
NATIONAL BULLETIN NO. 8 (BoB/02/2025)**

TIME OF ISSUE: 0230 HOURS IST

DATED: 16.07.2025

FROM: INDIA METEOROLOGICAL DEPARTMENT

(FAX NO. 24643965/24699216/24623220)

**TO: CONTROL ROOM, NDM, MINISTRY OF HOME AFFAIRS (FAX.NO. 23093750)
CONTROL ROOM NDMA (FAX.NO. 26701729)
CABINET SECRETARIAT (FAX.NO.23012284, 23018638)
PS TO HON'BLE MINISTER FOR S & T AND EARTH SCIENCES (FAX NO.23316745)
SECRETARY, MOES (FAX NO. 24629777)
H.Q. (INTEGRATED DEFENCE STAFF AND CDS) (FAX NO. 23005137/23005147)
DIRECTOR GENERAL, DOORDARSHAN (23385843)
DIRECTOR GENERAL, AIR (23421105, 23421219)
PIB MOES (FAX NO. 23389042)
UNI (FAX NO. 23355841)
D.G. NATIONAL DISASTER RESPONSE FORCE (NDRF) (FAX NO. 26105912, 2436 3260)
DIRECTOR, PUNCTUALITY, INDIAN RAILWAYS (FAX NO. 23388503)
CHIEF SECRETARY, ODISHA (FAX NO. 0674-2536660)
CHIEF SECRETARY, WEST BENGAL (FAX NO. 033-22144328)
CHIEF SECRETARY, GOVT. OF SIKKIM (FAX NO.0359-2222851)
CHIEF SECRETARY, GOVT. OF BIHAR (FAX NO. 0612-2217085)
CHIEF SECRETARY, GOVT. OF JHARKHAND (FAX NO. 0651-2400255)
CHIEF SECRETARY, GOVT. OF CHHATTISGARH (FAX NO. 0771-2221206)
CHIEF SECRETARY, GOVT. OF MADHYA PRADESH (FAX NO. 0755-2551521)
CHIEF SECRETARY, GOVT. OF RAJASTHAN (FAX NO. 0141-2227114)
CHIEF SECRETARY, GOVT. OF ASSAM (FAX NO. 0361-2260900)
CHIEF SECRETARY, GOVT. OF MEGHALAYA (FAX NO. 0364-2225978)**

**Subject: (A) Well Marked Low Pressure area over south Bihar and adjoining Jharkhand
(B) Depression over northwest Rajasthan**

(A) Well Marked Low Pressure area over south Bihar and adjoining Jharkhand

The well marked low pressure area over north Jharkhand and adjoining south Bihar moved west-northwestwards and lay over south Bihar and adjoining Jharkhand at 2330 hrs IST of yesterday, the 15th July 2025.

It is likely to move west-northwestwards across south Bihar towards east Uttar Pradesh during next 24 hours. However, the system is under continuous monitoring for possible re-intensification.

(B) Depression over northwest Rajasthan

The depression over northwest Rajasthan moved slowly north-northwestwards with a speed of 7 kmph during past 6 hours and lay centred at 2330 hrs IST of yesterday, the 15th July, 2025 over the same region, near latitude 29.3°N and longitude 73.5°E, about 40 km east-northeast of Anupgarh, 80 km south-southwest of Ganganagar and 140 km southwest of Bhatinda.

It is likely to continue to move north-northwestwards across northwest Rajasthan and weaken into a well marked low pressure area during next 12 hours.

Warnings:

(i) Rainfall Warning:

Odisha: Light to moderate rainfall at most places with heavy to very heavy rainfall at isolated places on 16th July and heavy rainfall at isolated places on 17th July.

West Bengal & Sikkim: Light to moderate rainfall at most places with heavy rainfall at isolated places over Sub-Himalayan West Bengal & Sikkim on 16th July.

Jharkhand: Light to moderate rainfall at most places with heavy to very heavy rainfall at a few places on 16th July.

Bihar: Light to moderate rainfall at most places with heavy to very heavy rainfall at isolated places on 16th July and heavy rainfall at isolated places on 17th July.

Chhattisgarh: Light to moderate rainfall at most places with heavy to very heavy rainfall at isolated places on 16th July and heavy rainfall at isolated places on 17th July.

East Uttar Pradesh: Light to moderate rainfall at most places with heavy rainfall at isolated places during 16th – 18th July with heavy to very heavy rainfall at isolated places on 17th July.

West Uttar Pradesh: Light to moderate rainfall at most places with heavy rainfall at isolated places during 16th – 18th July.

East Madhya Pradesh: Light to moderate rainfall at most places with heavy to very heavy rainfall at isolated places during 16th -17th July.

West Madhya Pradesh: Light to moderate rainfall at most places with heavy rainfall at isolated places during 16th -18th July.

East Rajasthan: Light to moderate rainfall at most places with heavy rainfall at isolated places on 16th & 17th July.

West Rajasthan: Light to moderate rainfall at most places with heavy to very heavy rainfall at a few places on 16th July and heavy rainfall at isolated places on 17th July.

Assam: Light to moderate rainfall at most places with heavy rainfall at isolated places on 17th July.

Meghalaya: Light to moderate rainfall at most places with heavy rainfall at isolated places on 17th July.

(ii) Wind Warning:

- ❖ Squally wind speed reaching 35-45 kmph gusting to 55 kmph is likely over north Rajasthan and adjoining Haryana & Punjab for next 12 hours and decrease thereafter.
- ❖ Squally wind speed reaching 30-40 kmph gusting to 50 kmph is likely over Bihar, Jharkhand, north Chhattisgarh and adjoining east Uttar Pradesh during next 24 hours.

(v) Impact Expected and Action Suggested due to heavy rainfall and squally winds

Impact expected:

- ❖ Breaking of tree branches, uprooting of small trees like banana, papaya, drum sticks. Strong wind and rain may damage plantation, horticulture and standing crops.
- ❖ Partial damage to vulnerable structures due to strong winds and rain.
- ❖ Minor damage to kutcha houses/walls, huts and roads due to heavy rain.

- ❖ Loose objects may fly.
- ❖ Onshore and offshore operations may get affected.
- ❖ Small ships, trawlers and boats may be affected.
- ❖ Road and rail traffic may be affected due to heavy rain and squally winds.
- ❖ There could be localised landslides, mudslides, landslips, water logging, inundation and flooding over low lying areas.
- ❖ Occasional reduction in visibility due to heavy rainfall.
- ❖ Helicopter services may get affected.

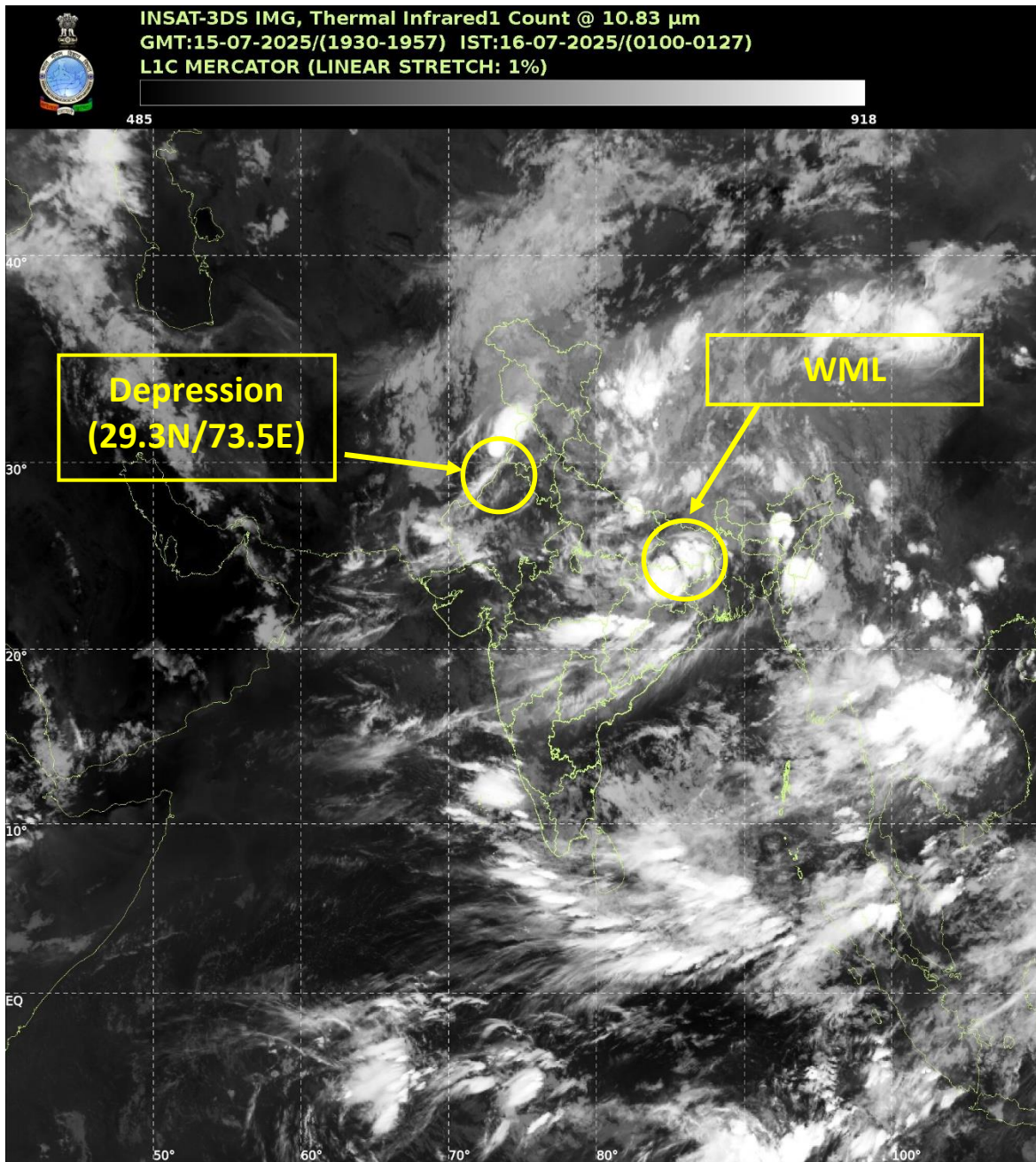
Action suggested:

- ❖ People are advised to keep a watch on the weather for worsening conditions and be ready to move to safer places accordingly.
- ❖ Take safe shelters; do not take shelter under trees, as there could be lightning.
- ❖ In case of expected lightning, unplug electrical/ electronic appliances, immediately, get out of water bodies and keep away from all the objects that conduct electricity.
- ❖ Tourism and recreational activities to be regulated.
- ❖ Onshore and offshore activities to be judiciously regulated.
- ❖ Helicopter services to be regulated.

Next bulletin will be issued at 0830 hours IST of today, the 16th July, 2025.

(Suprit Kumar)
Scientist E, NWFC, New Delhi

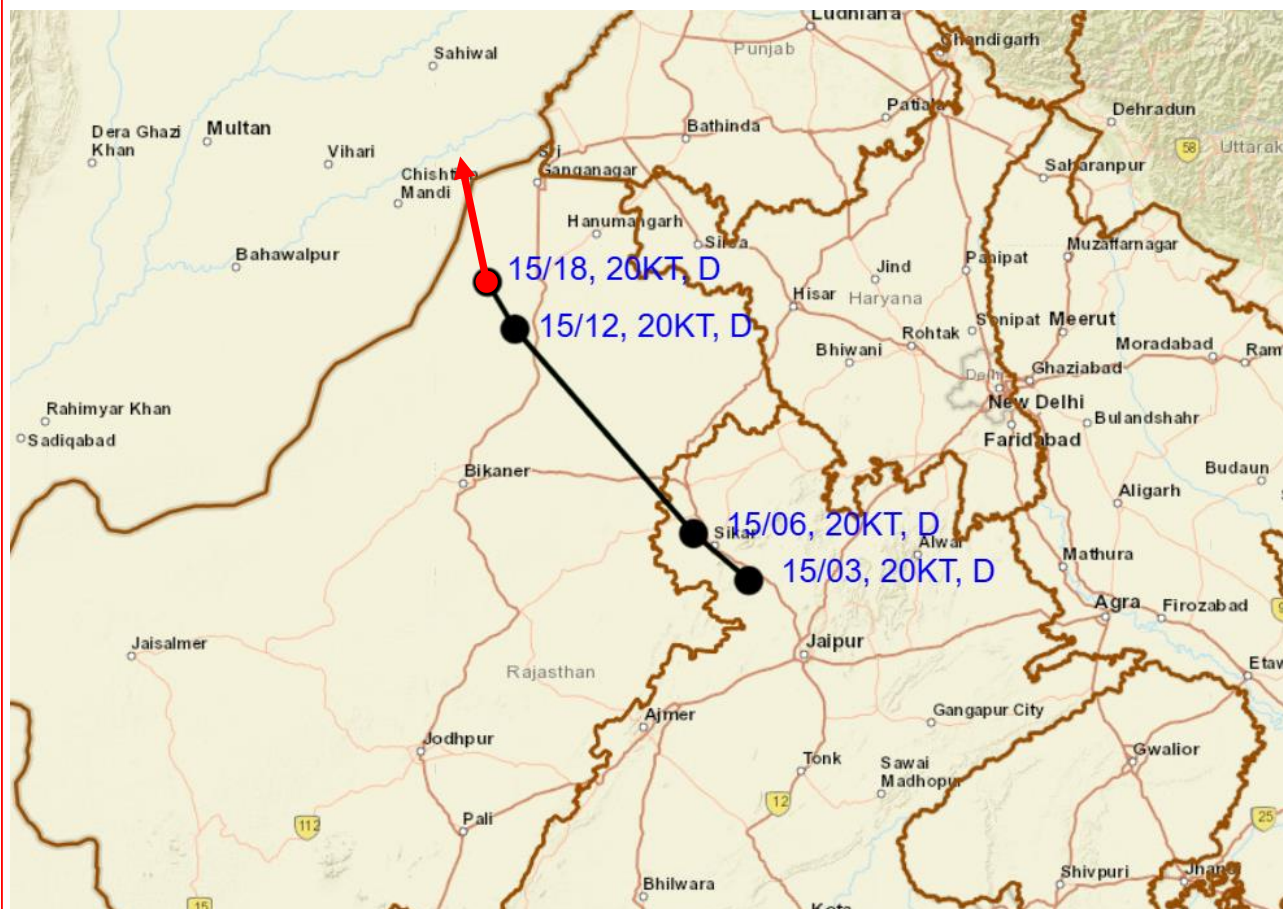
Copy to: ACWC Kolkata/ACWC Chennai/CWC Bhubaneswar/CWC Vishakhapatnam/Meteorological Centres- Port Blair/ Itanagar/ Kohima/ Agartala/ Gangtok/ Imphal/ Aizwal/ Shillong/ Gangtok/ Regional Meteorological Centre Guwahati



WML – Well Marked Low Pressure Area



OBSERVED AND FORECAST TRACK OF DEPRESSION OVER NORTHWEST RAJASTHAN AT 1800 UTC (2330 HRS. IST) OF 15th JULY 2025

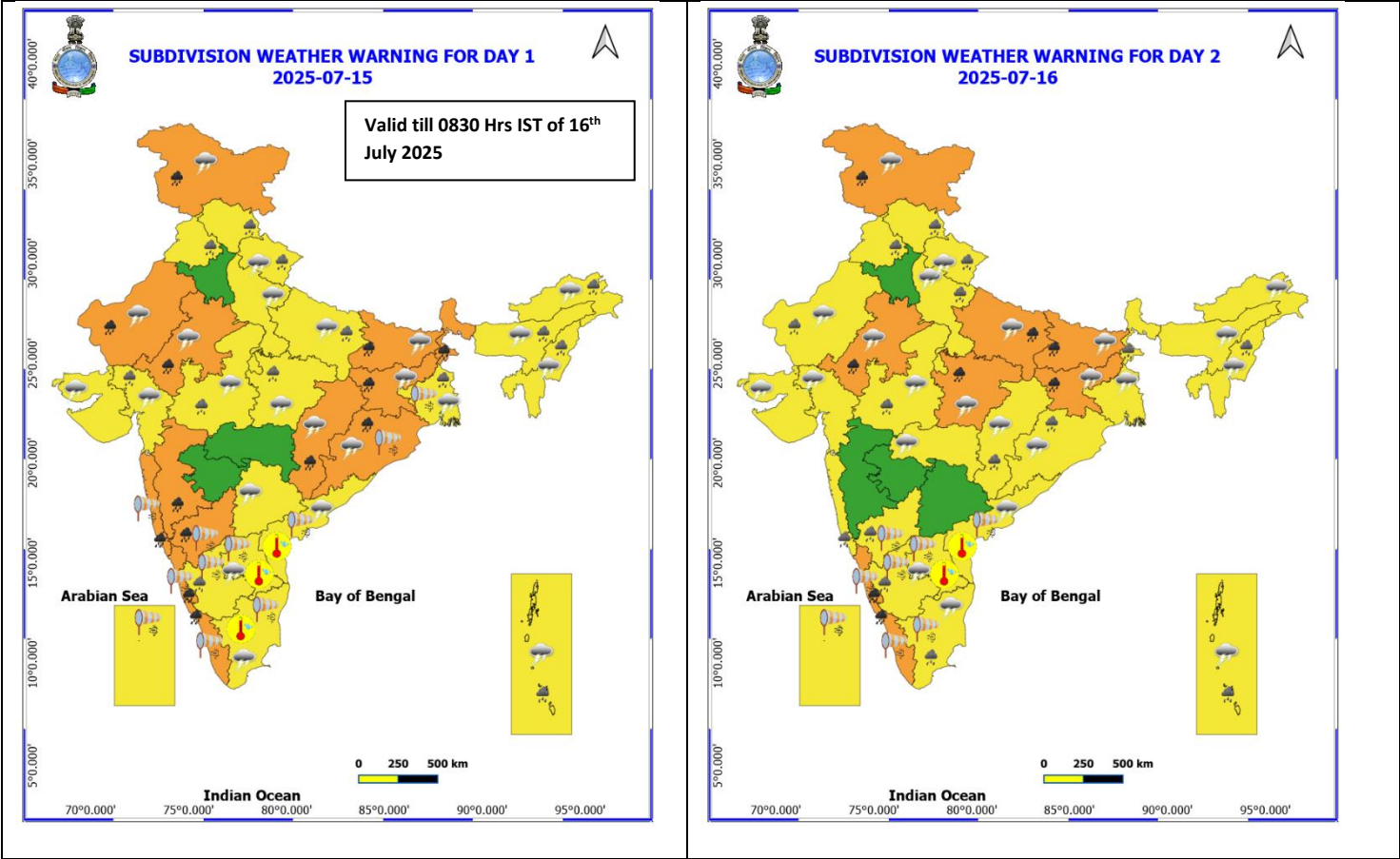


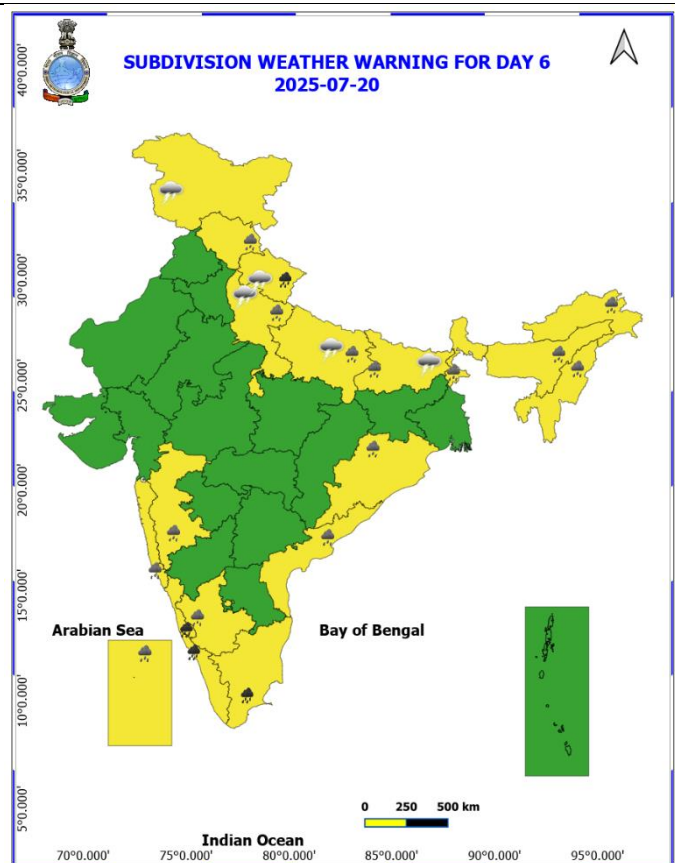
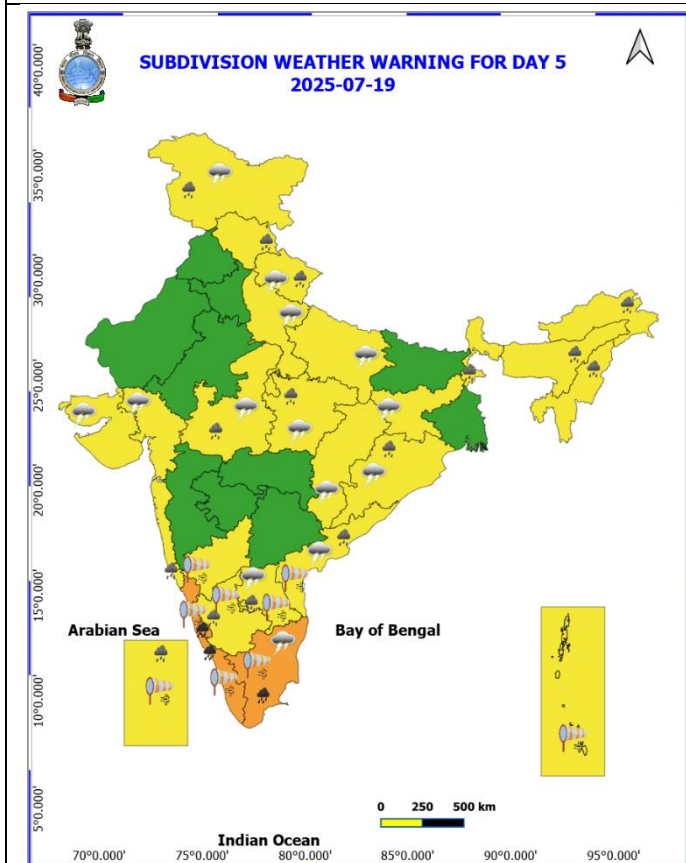
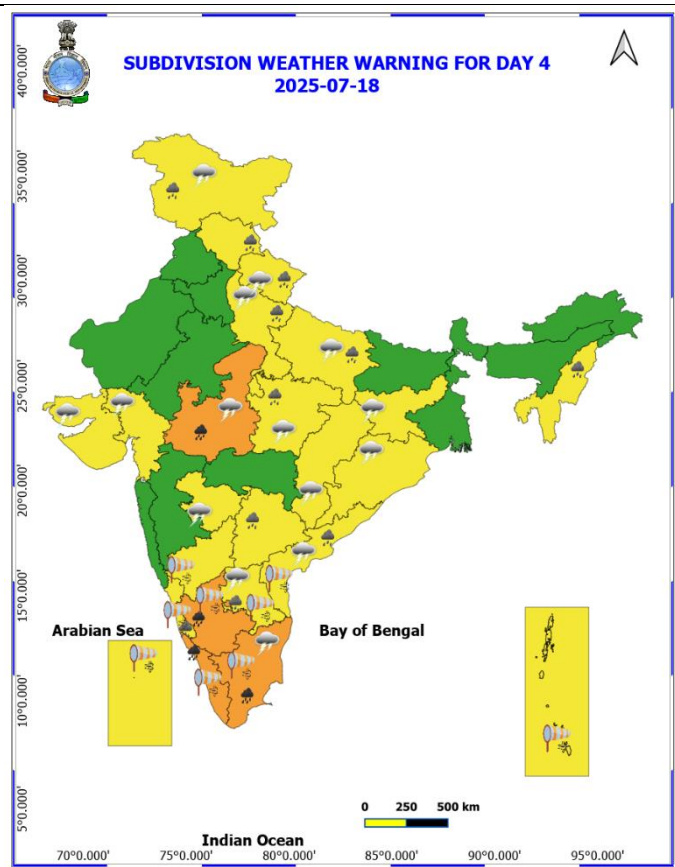
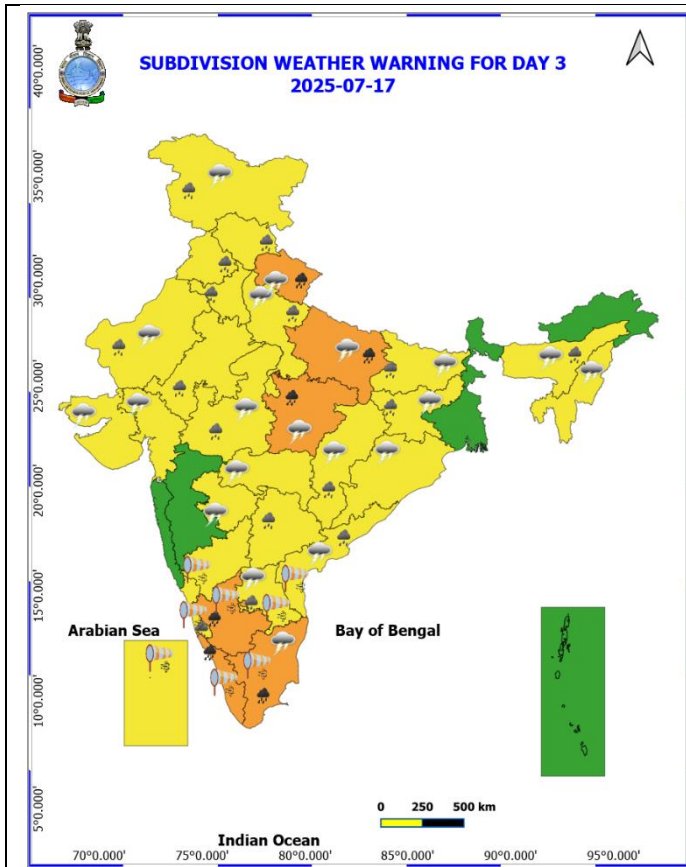
D : DEPRESSION (17-27 KT)
DD : DEEP DEPRESSION (28-33 KT)
CS : CYCLONIC STORM (34-47 KT)

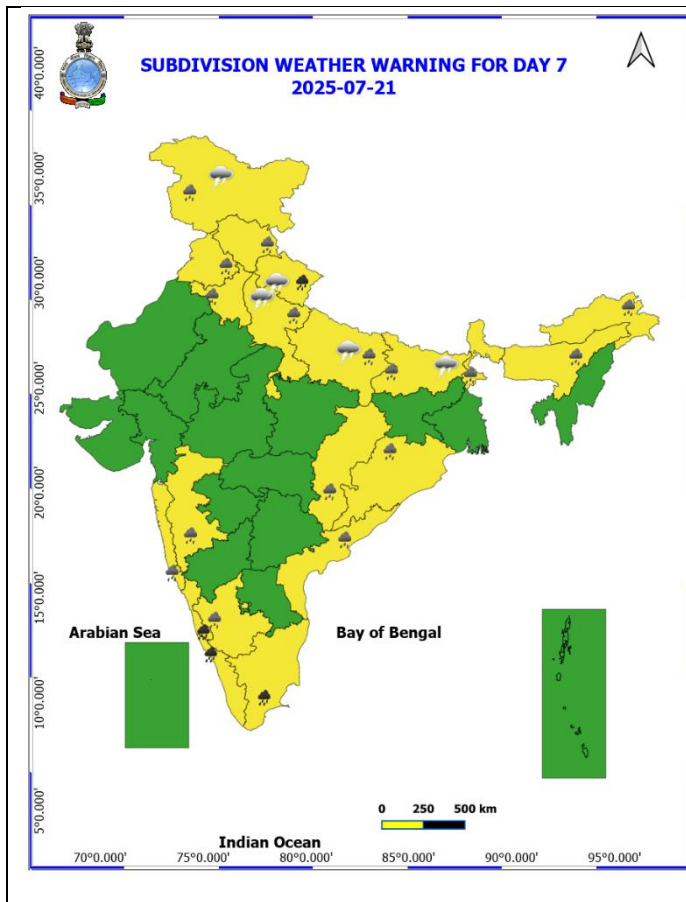
DATE/TIME IN UTC 1KT=1.85 KMPH
IST=UTC + 0530
L: LOW PRESSURE AREA
WML: WELL MARKED LOW PRESSURE AREA
D: DEPRESSION (17-27 KT)
DD: DEEP DEPRESSION (28-33 KT)
CS: CYCLONIC STORM (34-47 KT)
SCS: SEVERE CYCLONIC STORM (48-63KT)
VSCS: VERY SEVERE CYCLONIC STORM (64-89 KT)
ESCS: EXTREMELY SEVERE CYCLONIC STORM (90-119 KT)
SuCS: SUPER CYCLONIC STORM (≥ 120 KT)

● LESS THAN 34 KT
○ 34-47 KT
○ ≥ 48 KT
— OBSERVED TRACK
— FORECAST TRACK
▲ CONE OF UNCERTAINTY

Weather Warning Graphics







- Fog
- Heavy Rain
- Very Heavy Rain
- Extremely Heavy Rain
- Thunder & Lightning
- Hailstorm
- Dust Raising Winds
- Heavy Snow
- Dust Storm
- Heat Wave
- Warm Night
- Hot Day
- Hot & Humid
- Strong Surface Winds
- Cold Wave
- Cold Day
- Ground Frost

COLOUR CODED WARNING

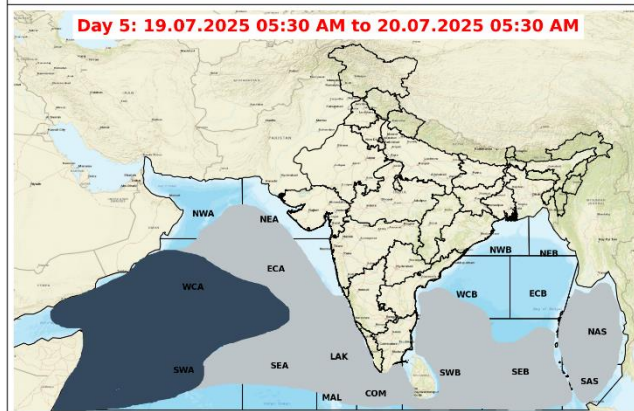
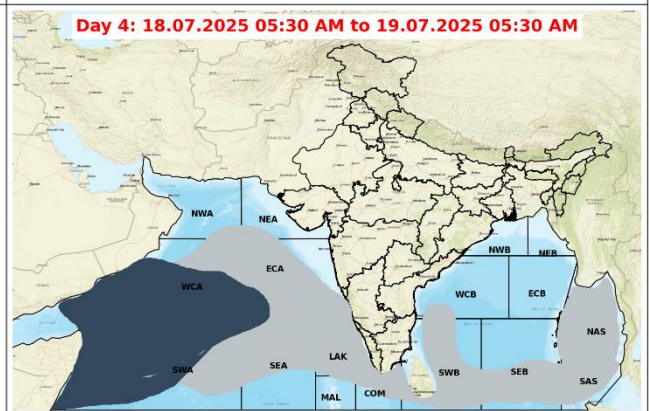
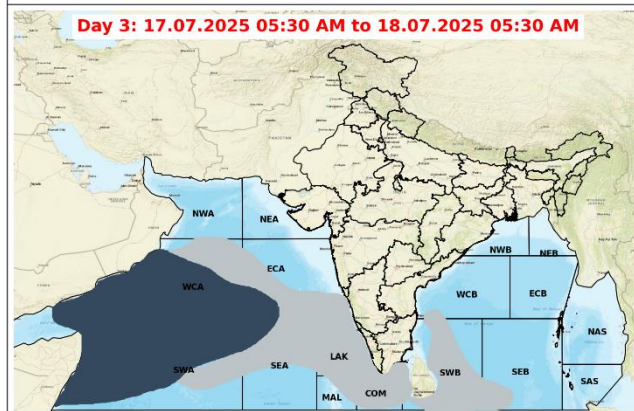
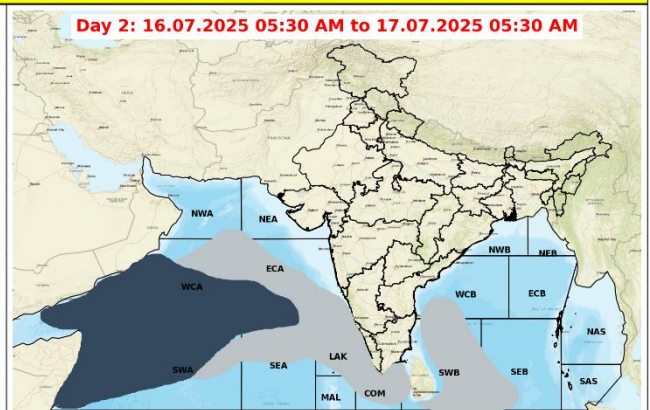
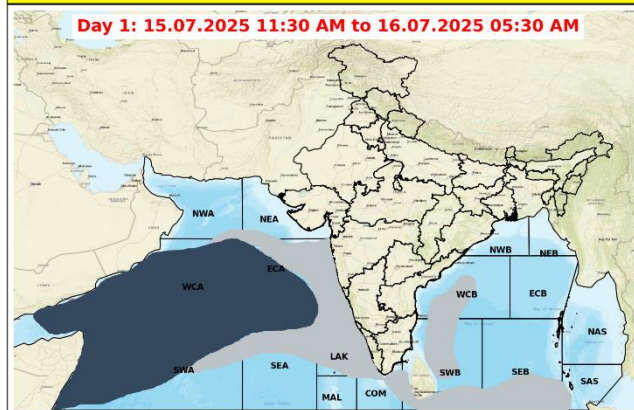
- No Warning (No Action)
- Watch (Be Aware)
- Alert (Be Prepared To Take Action)
- Warning (Take Action)

Probabilistic Forecast

Terms	Probability of Occurrence (%)
Unlikely	< 25
Likely	25 - 50
Very Likely	50 - 75
Most Likely	> 75

* Red colour warning does not mean "Red Alert", Red colour warning means "Take Action".
Forecast and Warning for any day is valid from 0630 hours IST of day till 0630 hours IST of next day.
For more details, kindly visit <https://mausam.india.gov.in> or contact: 011-2434-4599
(Service to the Nation since 1875)

Fishermen Warning Graphics



Legend

- | | |
|---|---|
| Squally wind with speed 55-65 kmph gusting to 75 kmph | CS with Gale winds with speed 60-80 kmph gusting to 90 kmph |
| Squally Weather with wind speed 40-50 kmph gusting to 60 kmph | SCS with Gale wind speed 90-110 kmph gusting to 120 kmph |
| Squally Weather with wind speed 45-55 kmph gusting to 65 kmph | VSCS with Gale wind speed 120-165 kmph gusting to 185 kmph |
| Squally wind with speed 45-55 kmph gusting to 65 kmph | ESCS with Gale wind speed 165-220 kmph gusting to 245 kmph |
| Squally wind with speed 50-60 kmph gusting to 70 kmph | |

Fishermen are advised not to venture into the marked areas.

Flash Flood Guidance

24 hours Outlook for the Flash Flood Risk (FFR) till 1730 IST of 16-07-2025:

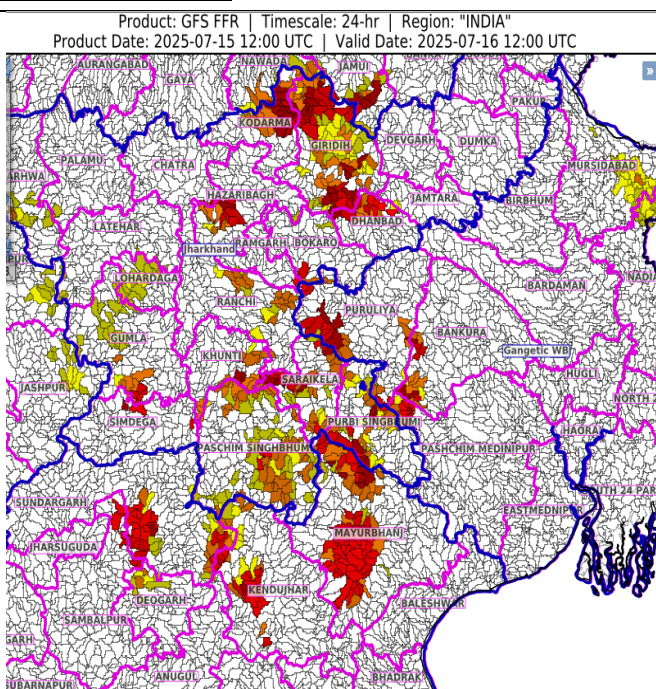
Low to Moderate flash flood risk likely over few watersheds & neighbourhoods of following Met Sub-divisions during next 24 hours.

Odisha - Deogarh, Kendujhar, Mayurbhanj and Sundargarh districts.

Gangetic West Bengal - Bankura, Mursidabad, Pashchim Medinipur and Puruliya districts.

Jharkhand - Bokaro, Dhanbad, East Singhbhum, Garhwa, Giridih, Gumla, Hazaribagh, Khunti, Koderma, Lohardaga, Ranchi, Saraikela, Simdega and West Singhbhum districts.

Surface runoff/ Inundation may occur at some fully saturated soils & low-lying areas over Area of Concern (AoC) as shown in map due to expected rainfall occurrence in next 24 hours.



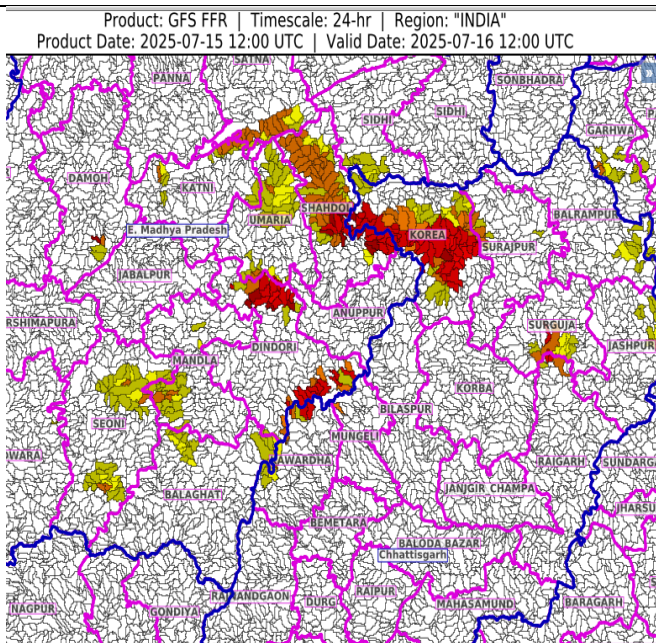
24 hours Outlook for the Flash Flood Risk (FFR) till 1730 IST of 16-07-2025:

Low to Moderate flash flood risk likely over few watersheds & neighbourhoods of following Met Sub-divisions during next 24 hours.

Chhattisgarh - Balarampur, Jashpur, Korea, Surajpur and Surguja districts.

East Madhya Pradesh - Balaghat, Damoh, Dindori, Katni, Mandla, Satna, Seoni, Shahdol, Sidhi and Umaria districts.

Surface runoff/ Inundation may occur at some fully saturated soils & low-lying areas over Area of Concern (AoC) as shown in map due to expected rainfall occurrence in next 24 hours.



Flash Flood Risk

High Risk (Take Action)

Moderate Risk (Be Prepared)

Low Risk (Be Updated)